

promarine

WIDE-BAND ANTENNAS

ALSO FOR **4G / 5G** COMMUNICATIONS



proTAC 5311

proANT 5331

proANT 5340



**LEAVE THE SHORE BEHIND
-STAY CONNECTED!**



proTAC 5311 - THE BEST 4G/5G CONNECTION

STABLE CONNECTION

Good for critical ERP and VPN systems

ROBUST ALL-WEATHER PROOF

For harsh conditions at sea

FREQUENCY RANGE 600 MHz – 6 GHz

Covers all 2G, 3G, 4G and 5G and WiFi frequencies worldwide

UP TO 7dBi TOTAL NET GAIN - WITHOUT COMPROMISES

Longer range than standard antennas > 35km

UNIQUE RADIATING ELEMENT DESIGN

Made from solid copper, no lossy (resistive) elements

PROVIDES NEARLY 100% RADIATION EFFICIENCY

Huge cost savings in satellite based data

FULLY OMNIDIRECTIONAL HORIZONTAL RADIATION PATTERN

WIDTH 90 MM

HEIGHT 120 MM

WIDTH 140 MM

WEIGHT 600 G

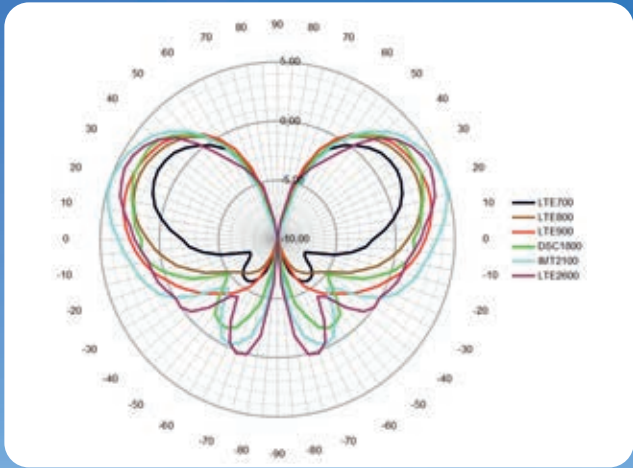
DC-GROUNDED

RF POWER 250W

N-TYPE FEMALE
CONNECTOR

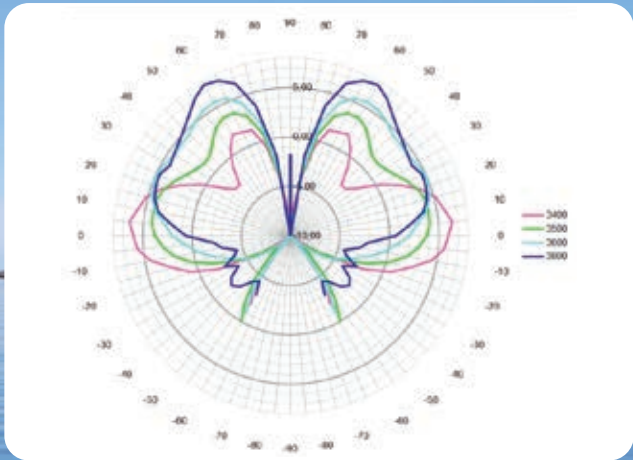
LIGHTNING AND ESD
PROTECTED





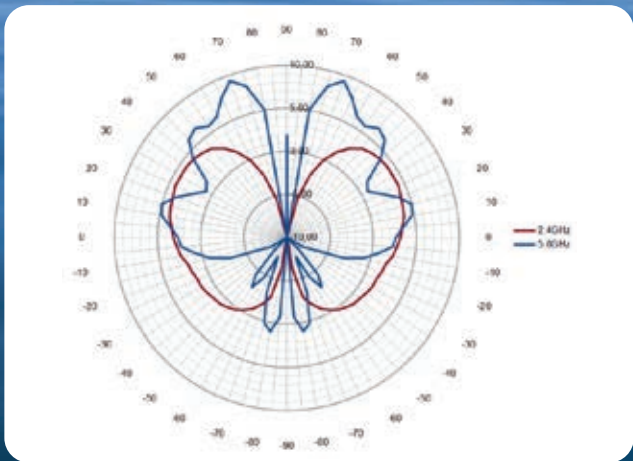
IDEAL VERTICAL RADIATION PATTERN

AT TYPICAL LTE FREQUENCIES MAKING 4G/5G CONNECTION STABLE EVEN AT ROUGH SEAS



VERTICAL RADIATION PATTERN

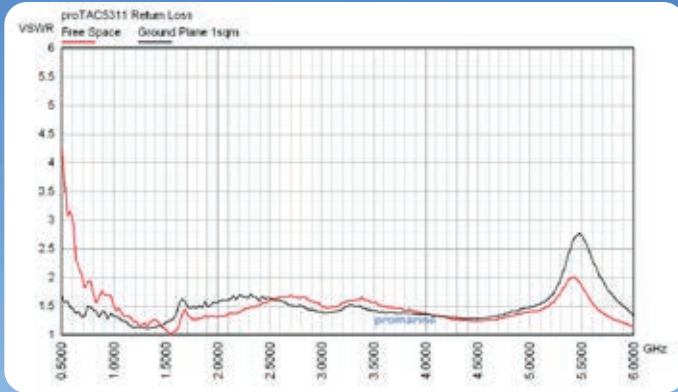
AT 3.5GHz 5G FREQUENCY BAND



VERTICAL RADIATION PATTERN

AT 2.4GHz AND 5.8GHz WIFI BANDS

proTAC 5311 - THE BEST 4G/5G CONNECTION



THE SMALLER THE VSWR

THE BETTER THE ANTENNA IS MATCHED TO THE MODEM AND THE MORE POWER IS DELIVERED TO THE ANTENNA

MIMO TECHNOLOGY USES MULTIPLE ANTENNAS TO ENHANCE WIRELESS LINK QUALITY AND RELIABILITY. IT ENABLES CONCURRENT TRANSMISSION AND RECEPTION OF MULTIPLE DATA SIGNALS OVER THE SAME RADIO CHANNEL, CAPITALIZING ON MULTIPATH PROPAGATION

MULTIPLE VERSIONS OF THE SAME SIGNAL

REDUCES ERROR RATE

STABILIZES THE LINK

IMPROVES PERFORMANCE

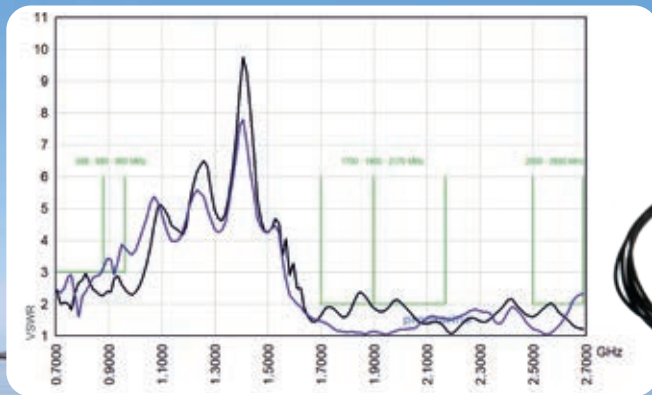
SPACE DIVERSITY UTILIZES ANTENNAS LOCATED IN DIFFERENT POSITIONS TO BENEFIT FROM VARIOUS RADIO PATHS

proANT 5340 - ALL-IN-ONE SOLUTION

COST EFFECTIVE, ALL-IN-ONE SOLUTION FOR ONE 4G ROUTER

2 CROSS-POLARIZED LTE/4G ANTENNAS, 2 DUAL BAND WIFI ANTENNAS (2.4GHz / 5GHz) AND AN ACTIVE GNSS ANTENNA

TAKING ADVANTAGE OF THE REFLECTED SIGNALS AROUND US



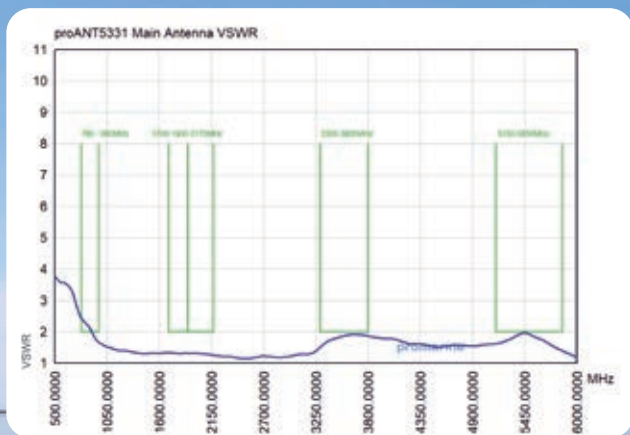
Model:	proANT 5340	Mounting: BSP1"-11TPI internal thread antenna mount	
Type:	MIMO antenna omnidirectional	Environmental:	indoors, outdoor case IP67 shock proof
Antenna modules		Frequency	Polarization
LTE1 antenna		698MHz - 960MHz 1.7GHz - 2.7GHz	Vertical polarization
LTE2 antenna		698MHz - 960MHz 1.7GHz - 2.7GHz	Horizontal polarization
WiFi1		2.4GHz - 2.5GHz 5.15GHz - 5.85GHz	Vertical polarization
WiFi2		2.4GHz - 2.5GHz 5.15GHz - 5.85GHz	Vertical polarization
GNSS antenna (+5VDC)		1559-1610MHz	Linear horizontal
Material: ASA plastic radome, ABS base		Cables: RG174 cables with SMA-male connectors	
Antenna gain: 1-5dBi		Size (h*I*w): Height 148mm, width 93mm Weight 600g	

proANT 5331 - HIGH PERFORMANCE MIMO

HIGH PERFORMANCE MIMO ANTENNA FAMILY


MAIN 4G/5G ANTENNA IS BASED ON THE SAME DESIGN AS
OUR LEADING MODEL proTAC5311

UP TO 5 ANTENNAS IN 1
(LTE / WIFI / GNSS)



Model:	proANT 5331* (check order code for each variant from separate list)		
Type:	MIMO antenna omnidirectional	Environmental:	Indoors, outdoors Case IP56 shock proof
Up to 5 antenna options	Frequency	Polarization	
LTE Main antenna	790-6000MHz	Vertical polarization	
LTE AUX antenna	824-2170MHz	Horizontal polarization	
WiFi Main antenna or LTE AUX antenna	2400/5800MHz or 824-2170MHz	Cross-polarized WiFi antennas or Horizontal polarization LTE AUX antennas	
WiFi AUX antenna or LTE AUX antenna	2400/5800MHz or 824-2170MHz		
GNSS antenna(+5VDC)	1558-1610MHz	Circular polarization	
Material: Plastic cover (ASA) Stainless steel mounting plate	Mounting: BSP1"-11TPI internal thread antenna mount		
Primary antenna: Vertical polarization, omnidirectional Antenna gain 0-5dBi	Size (h*I*w): 155x140x105mm without mounting thread Height with BSP1"-11TPI mounting thread +42mm		

proANT5331 OPTIONS WITH PIGTAILS AND SMA-FEMALE CONNECTORS

ORDER CODE	ANTS331A	ANTS331AW	ANTS331A1	ANTS331A1W
ANTENNAS	4G Main 790-6000MHz	4G Main 790-6000MHz	4G Main 790-6000MHz	4G Main 790-6000MHz
	4G Aux 824-2170MHz	4G Aux 824-2170MHz	4G Aux 824-2170MHz	4G Aux 824-2170MHz
	WiFi 2.4/5.8GHz	WiFi 2.4/5.8GHz		
	WiFi 2.4/5.8GHz	WiFi 2.4/5.8GHz		
	GNSS 1558-1610MHz	GNSS 1558-1610MHz		
CONNECTORS	5 x SMA-female RG316 ~30cm pigtails		2 x SMA-female RG316 ~30cm pigtails	
COLOR	Blue / black bottom	White / black bottom	Blue / black bottom	White / black bottom
MOUNTING	BSP1"-11TPI inner thread			
ORDER CODE	ANTS331A2	ANTS331A2W	ANTS331A3	ANTS331A3W
ANTENNAS	4G Main 790-6000MHz	4G Main 790-6000MHz	4G Main 790-6000MHz	4G Main 790-6000MHz
	4G Aux 824-2170MHz	4G Aux 824-2170MHz	4G Aux 824-2170MHz	4G Aux 824-2170MHz
	WiFi 2.4/5.8GHz	WiFi 2.4/5.8GHz	GNSS 1558-1610MHz	GNSS 1558-1610MHz
	WiFi 2.4/5.8GHz	WiFi 2.4/5.8GHz		
CONNECTORS	4 x SMA-female RG316 ~30cm pigtails		3 x SMA-female RG316 ~30cm pigtails	
COLOR	Blue / black bottom	White / black bottom	Blue / black bottom	White / black bottom
MOUNTING	BSP1"-11TPI inner thread			
ORDER CODE	ANTS331A4	ANTS331A4W		
ANTENNAS	4G Main 790-6000MHz	4G Main 790-6000MHz		
	4G Aux 824-2170MHz	4G Aux 824-2170MHz		
	4G Aux 824-2170MHz	4G Aux 824-2170MHz		
	4G Aux 824-2170MHz	4G Aux 824-2170MHz		
CONNECTORS	4 x SMA-female RG316 ~30cm pigtails			
COLOR	Blue / black bottom	White / black bottom		
MOUNTING	BSP1"-11TPI inner thread			

proANT5331 OPTIONS WITH N-FEMALE CONNECTORS

ORDER CODE	ANTS331B1	ANTS331B1W
ANTENNAS	4G Main 790-6000MHz	4G Main 790-6000MHz
	4G Aux 824-2170MHz	4G Aux 824-2170MHz
CONNECTORS	2 x N-female	
COLOR	Blue / black bottom	White / black bottom
MOUNTING	BSP1"-11TPI inner thread	

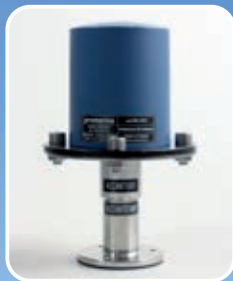


promarine

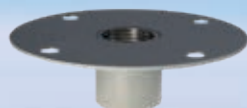
MOUNTING OPTIONS



HORIZONTAL / VERTICAL POLE



DECK MOUNT



ACCANT 1001
MOUNT ADAPTOR



ACCANT 1002
BSP1" -11 TPI to 1" -14TPI
MOUNT ADAPTOR



ACCANT1003 HORIZONTAL /
VERTICAL POLE OR WALL MOUNT



ACCANT1012 HORIZONTAL
proTAC ANTENNA MOUNT



MADE IN FINLAND

Promarine Ltd
sales@promarine.fi
>> promarine.fi

